



"Products That Work"

I-O 5430

Multi-protocol Print Server for AS/400-to-LAN Printing



The I-O 5430 is a single port, multi-protocol print server. It combines the functionality of a **10/100 Mbps Ethernet print server with reliable, full-function AS/400-to-LAN printing**. It offers unparalleled AS/400 printing control using enhanced Telnet 5250 (TN5250e) over TCP/IP. The I-O 5430 allows LAN printing from Windows, Novell, OS/2, or Unix platforms as well as natively from an IBM AS/400.

The I-O 5430 attaches one parallel printer directly to a 10 or 100 Mbps Ethernet LAN, and supports multiple protocols including TCP/IP, IPX/SPX, and NetBIOS. This support allows the I-O 5430 to be used with a variety of operating systems including Windows NT, 95, 98, Novell 3.x, 4.x, 5.x, OS/2, Unix, and OS/400. The I-O 5430 also supports one IBM printer session featuring I-O's field-proven IBM printer emulations. Combined, these unique characteristics enable users to share printer resources even when several different operating systems are in use.

In addition to operating as an Ethernet LAN print server, the I-O 5430 supports AS/400 printing over TCP/IP (TN5250e), SNA (APPC), and AnyNet (SNA encapsulated in TCP/IP). Using any one of these protocols, the I-O 5430 allows the LAN attached printer to offer the same reliable, full-function AS/400 printing support as a direct twinax-attached 5250 printer. These protocols also offer users controlled host printing directly from the IBM AS/400. TN5250e adds simple, one step set-up (auto-configuration) as well.

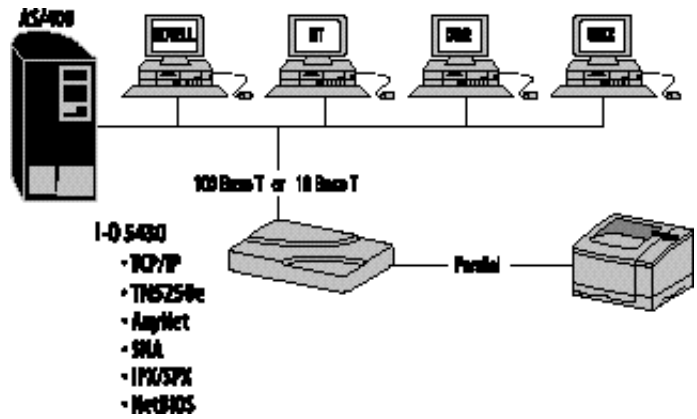
The I-O 5430 can also speed up AS/400 printing. Since the AS/400 EBCDIC to ASCII data conversion is done by the I-O 5430 it frees the host, or a client PC from performing this resource-intensive task. This means a faster first page out, and overall increased speed.

IBM Compatibility +

I-O Corporation

1490 North 2200 West Suite 100 • Salt Lake City, Utah 84116 • Phone: (801) 973-6767 • Fax: (801) 974-5683 • <http://www.iocorp.com>

I-O 5430 Multi-protocol Print Server



IBM Features

- Supported Protocols for AS/400 Printing:
 - TCP/IP (TN5250e)
 - TCP/IP (LPR/LPD)
 - SNA (APPC)
 - AnyNet (SNA over TCP/IP)
- Supported IBM Printer Emulations:
 - 3812-1 (SCS)
 - 4214
 - 5224/25/56
- Supported Printer Drivers for EBCDIC-ASCII Conversion:
 - HP PCL
 - IBM Proprinter, PPDS
 - Epson ESC/P2, FX, LQ
 - Generic

LAN (ASCII) Features

- Supported Protocols for LAN (ASCII) printing:
 - TCP/IP (LPR/LPD)
 - IPX/SPX
 - NetBIOS
 - I-O TCP/IP DirectPort™ Printing (Windows 95/98 Peer-to-Peer)
- Supported LAN (ASCII) Hosts:
 - Novell (NDS, bindery, PSERVER, RPRINTER)
 - Windows 95, 98, NT, Windows for Workgroups
 - OS/2 Warp, OS/2
 - UNIX
- Supported Ethernet Frame Types:
 - IEEE 802.2, 802.3, Ethernet II, SNAP
- Supported Ethernet Connections:
 - 10BaseT, 100BaseT (auto-sensing)
- Printer Ports:
 - 1 IEEE 1284 bi-directional Centronics parallel port
- 100-240V (IEC) Auto Switching Power Supply Included
- Powerful RISC Processor
- FLASH Memory
- SNMP Compliant

+ Features

- AS/400 printing over Ethernet
- Enhanced Telnet 5250 (TN5250e)
- Printer error reporting to the AS/400
- Page range printing from the AS/400
- Auto configuration (One step setup)
- Off-loading of data conversion
- One IBM printer session
- True IBM printer emulations
- Simultaneous, multi-host printing (TCP/IP, IPX/SPX, NetBIOS, SNA, AnyNet)
- 10BaseT, and 100BaseT
- Powerful RISC processor

Benefits

- Allows AS/400 print jobs to be seamlessly printed over a LAN.
- Communicate with the AS/400 using native TCP/IP.
- Prevents loss of AS/400 print data by providing same level of print status reporting as a 5250 twinax printer.
- Permits users to print select page ranges from large documents and reports.
- Installs in minutes using native TCP/IP avoiding complex software configurations.
- Eliminates unnecessary AS/400 or PC overhead by converting EBCDIC data directly on the I-O 5430.
- Supports one 5250 printer session for laser, dot-matrix, or specialty (barcode) printers.
- Permits full-function AS/400 printing on the attached LAN printer.
- Maximizes printer utilization by supporting concurrent printing not only from the AS/400 but from Novell, Windows NT, Windows 95, OS/2, UNIX, etc.
- Protects print server investment when upgrading the LAN to 100 Mbps.
- Takes advantage of the LAN printer's maximum print speed even when processing AS/400 jobs.

Contact your I-O dealer at:

I-O Corporation

1490 North 2200 West Suite 100, Salt Lake City, Utah 84116
 Phone: (801) 973-6767 • Fax: (801) 974-5683
<http://www.iocorp.com>

I-O and the I-O logo are registered trademarks of I-O Corporation. IBM is a registered trademark of International Business Machines Corporation. All other trademarks are the property of their respective companies.



"Products That Work"

