

## Overview

The RBT Series delivers on the promise of increased performance and low cost in a compact package. Assembled in the USA, the RBT Series weighs just over 1lb. allowing you flexible mounting options and lower shipping costs. The robust and fan-less construction allows for quiet and reliable operation.

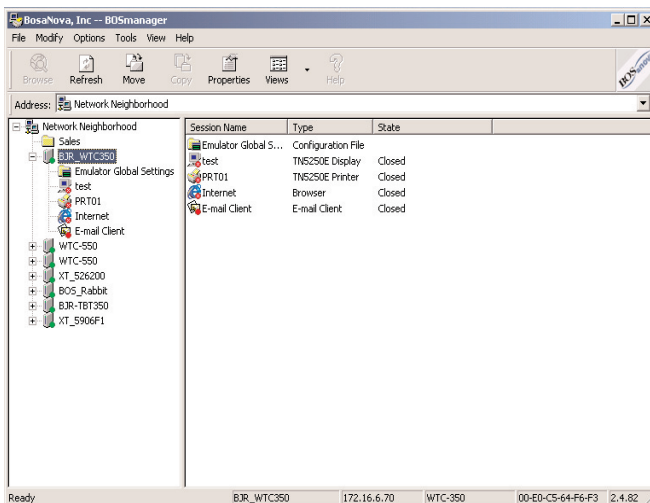
## Versatile Operating Environment

The RBT-466 supports three modes of operation:

**TBT Mode** - Text based setup with startup wizard (no mouse required), terminal green screen with auto start and auto-reconnect, 122 key keyboard support, Function key macro support and split screen.

**WBT Mode** - Windows based Terminal mode, where the terminal behaves like a CE.NET device with full screen applications, GUI 5250/3270, Terminal Server access, Citrix or Propalms which auto start and auto-reconnect.

**Desktop Mode** - Windows XP type user interface provides access to all applications in a windowing environment.



The RBT-466 Thin Client is simple to configure either locally or remotely using the 10ZiG Management Software



\* Shown with Optional Internal Wireless

## Benefits:

- The RBT-466 outperforms similar products by more than three times.
- Industry standard OS (Linux 2.6 Kernel)
- Small form factor for space-saving, desktop and mounted deployments
- Advanced emulation with 8 5250 sessions. Split Screen, Rule Cursor, macro support, multi host, GUI, SSL, 122-key keyboard support
- Optional VDI clients available - VMware, Provision Networks, Leostream, XenDesktop, Ericom
- Available option for internal wireless
- 3-year advance exchange warranty



## Options

Part Number	5466
Standard Flash/Ram	128MB/256MB (Flash/Ram)
Standard Client Software	
ICA	Version 10
RDesktop	•
Host Access	Supports 8 TN5250e and TN3270e sessions, Telnet with SSH, SSL, Wyse 60, Xterm R6, VT100, VT220 and VT400
Propalms TSE	•
CrossRun	•
Screen Resolution	Up to 1920 x 1440

## Hardware Configuration

Form Factor	Compact stand-alone metal case
CPU	VIA Eden 400MHz
Audio	
Mic In/Line Out	•
Internal Speaker	•
Networking	Autosensing, 10/100 Ethernet, RJ-45, WakeOnLAN, PXE boot, USB 802.11 b/g support
I/O and Expansion	
PS2 Port	1
USB Ports – Type 2	4
Physical Specifications	
Dimensions	1.4" W x 5.9" H x 4.7" D 35mm x 150 mm x 120 mm
Base Weight	1.4 lbs. (.66kg)
Environmental	
Operating Temperature	0° ~ 35°C 32° ~ 95°F
Operating Humidity	0% ~ 90%
Power Consumption	8-9 Watts average
Power Requirements	DC12V, 1.2A, 8W
Security	Kensington Security Lock Slot

## Software Configuration

Operating System	Linux 2.6 Kernel
Security Features	Read-only file system, locked-down user account, administrative passwords
Client Software	
Linux PN Agent	•
NX Client	•
Secure Gateway	•
VNC Shadowing	•
BOSmanager	•
ThinPrint	•
VDI	Provision Networks, Leostream, Ericom, XenDesktop, VMware optional
Language Support	US, UK English, Spanish, Italian, German, French, and 30 more including Eastern Europe
Special Features	Autostart/auto-restart connection, multiple level lock-down user interface

## Ordering Information

PID	Description
5466	RBT-466 Thin Client, Linux, 5250, RDP, ICA, AC/DC Adapter
MS001	Optical Mouse
9001	USB to Centronics Parallel
9004	VESA Mounting Bracket
9009	Internal Wireless
8104b	104-key PC Keyboard
8122b	122-key Driverless PC Keyboard

## Management

10ZiG Management Software	•
Push/Pull Updates	•
VNC	•
Software/Configuration Cloning	•

