

ACCELERATOR 1800 Series

Improves network and application performance by 100–400+%

Bandwidth intensive applications are playing an increasingly important role in enterprise productivity and cost savings. Enterprise Resource Planning (ERP), Customer Relationship Management (CRM), Intranets and Extranets have become mainstream business processes within enterprises. Expand Networks' ACCELERATORS enable faster deployments of new applications by supercharging enterprise network performance. By using the patented Enterprise Caching Technology (ECT Technology), the ACCELERATOR 1800 Series provides an immediate 100–400+% increase in network performance, measured in network capacity, throughput and speed increases across all applications and users.

Expands capacity on all types of networks

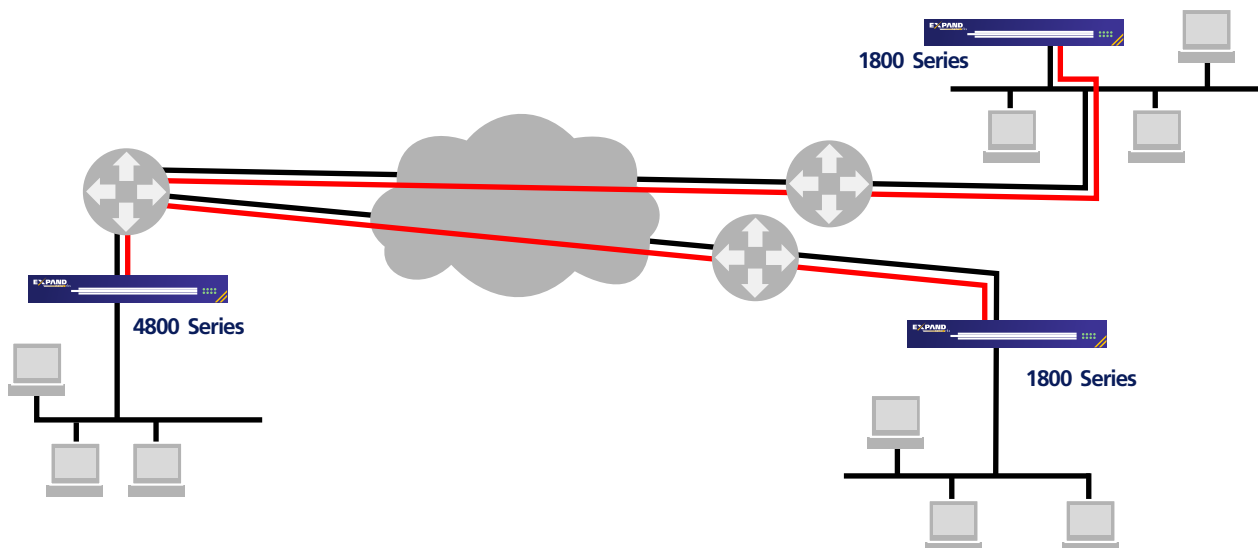
The ACCELERATOR 1800 Series extends the benefits of ECT Technology to a range of diverse networks including: ATM, VPN, xDSL, ISDN, wireless local loop, Private Line and Frame Relay. It supports aggregate accelerated throughput of up to 256 Kbps, and is installed on the Local Area Network (LAN). The ACCELERATOR 1800 Series sits behind the service provider's demarcation device, and therefore can accelerate IP Virtual Private Networks (VPN) as well as applications that involve encryption in the Wide Area Network (WAN) access device. Organizations that rely on managed Frame and IP services are now able to accelerate their data services without WAN equipment modification.

ACCELERATOR Benefits

- Improves network and application performance by 100–400+%
- Expands capacity on all types of networks
- Ideal for low speed remote sites and bandwidth-intensive operations such as disaster recovery
- Rapid deployment, instant results

Ideal solution for low speed remote sites and bandwidth-intensive operations such as disaster recovery

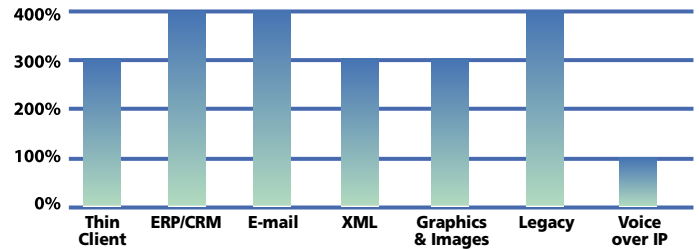
The ACCELERATOR 1800 Series is a cost-effective solution ideal for low speed remote sites. It also accelerates bandwidth-hogging network transactions such as backup and disaster recovery. With the high and recurring cost of bandwidth, enterprises are usually unable to dedicate an adequate number of circuits for such vital transactions. The ACCELERATOR 1800 Series frees up to 400% more Wide Area Network (WAN) capacity, allowing organizations to schedule such transactions more frequently and at the fraction of the cost of increasing the "size of the pipe".



Rapid deployment, instant results

The ACCELERATOR 1800 Series can be seamlessly integrated into existing networks, to immediately accelerate all IP traffic On-Path (on the link between the LAN segment and the router) or On-Lan (as any other LAN element). The ACCELERATOR 1800 Series was designed for data center-grade lights out operation. Its unique design, with no moving parts and auto-bypass functionality guarantee unsurpassed uptime and availability. Drop Recovery Code (DRC) functionality prevents packet loss on links serviced by the ACCELERATOR 1800. By limiting retransmissions and discard errors, DRC preserves data integrity while congestion management features help optimize scarce bandwidth and network resources.

Network Capacity Increases



SPECIFICATIONS

Physical

Width x Height x Depth:
17" x 1.7" x 13"
(43.2 cm x 4.4 cm x 33 cm)
Weight: 6.2 lbs. (2.8 kg)

Environment

Temperature: 32–122 °F (0–50 °C)
Humidity: 0 to 90% (non condensing)

Reliability

- ISO 9001 certified manufacturing facility
- Transparent auto-bypass
- No moving parts
- Error/packet drop correction for non-reliable links

Interfaces

LAN: Ethernet Autosensing 10/100 BaseT
Management Interfaces:
Console & Auxiliary: RS-232C (DB-9)

System Acceleration Capabilities

- 128–256 Kbps supporting up to 20 IP Tunnels

Power rating

Power supply:
Single Autosensing 100/230 Volt
AC Line Frequency: 50/60 Hz

Local/Remote Management Features

- Status LEDs
 - Power
 - Portactivity (Active, Ready)
- Advanced Cisco-like Command Line Interface (CLI) accessible via Telnet, Console, Dial Up
- SNMP V1.0 (MIB II) and Private MIB support
- Web-based User Interface
- TFTP software upgradeable
- RMON/RMON II

Security and Logging Features

- Authentication and authorization: RADIUS (RFC 2138), TACACS+, internal database
- Syslog event logging
- Email alerts from log
- SNTP– Simple Network Time Protocol support

Traffic Management Features

- IP Tunnel flow control
- Queuing: FIFO, Weighted Fair, Priority and Custom Queuing

Approvals

Safety: UL 1950, CAN/CSA C22.2, EN60950/A4, No. 950-95
EMC: FCC Part 15 subpart B Class A, EN55022, EN61000-4-2, EN61000-4-3, EN55024, EN61000-4-4, CISPR16

Specifications are subject to change without notice.



Expand Networks
103 Eisenhower Parkway
Roseland, NJ 07068
Telephone: 973-618-9000
Fax: 973-618-9254
Toll Free: 888-892-1250
www.expand.com
info@expand.com

(Expand Networks, ACCELERATOR 6800, ACCELERATOR 4800, ACCELERATOR 4000, ACCELERATOR 2800, ACCELERATOR 2750, and ACCELERATOR 1800 are trademarks of Expand Networks, Inc. All other trademarks are the property of their respective owners.)