

Improves network and application performance by 100-400+%

Bandwidth intensive applications are playing an increasingly important role in enterprise productivity and cost savings. Enterprise Resource Planning (ERP), Customer Relationship Management (CRM), Intranets and Extranets have become mainstream business processes within enterprises. Expand Networks' ACCELERATORs enable faster deployments of new applications by supercharging enterprise network performance. By using the patented Enterprise Caching Technology, (ECT Technology) the ACCELERATOR 4800 Series provides an immediate 100-400+% increase in network performance, measured in network capacity, throughput and speed increases across all applications and users.

Expands capacity on all types of networks

The ACCELERATOR 4800 Series extends the benefits of ECT Technology to a range of diverse networks including: ATM, VPN, xDSL, ISDN, wireless local loop, Private Line and Frame Relay. It supports aggregate accelerated throughput of up to 6Mbps, and is typically installed as a central site solution on the Local Area Network (LAN). The ACCELERATOR 4800 Series sits behind the service provider's demarcation device, and therefore can accelerate IP Virtual Private Networks (VPN) as well as applications that involve encryption in the Wide Area Network (WAN) access device. Organizations that rely on managed Frame and IP services are now able to accelerate their data services without WAN equipment modification.

ACCELERATOR Benefits

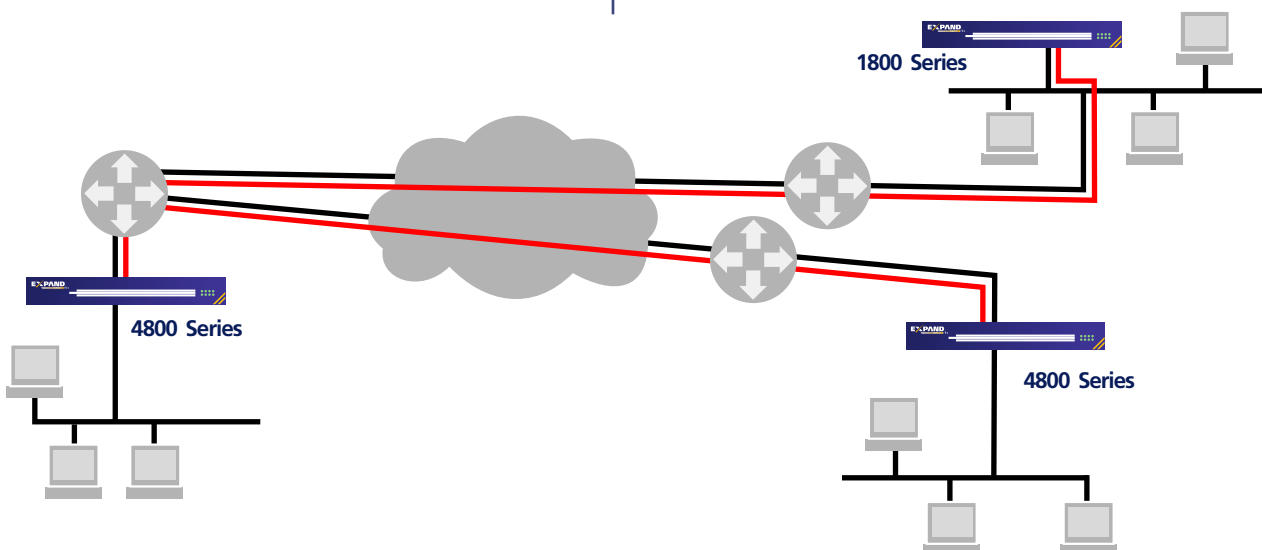
- Improves network and application performance by 100-400 +%
- Expands capacity on all types of networks
- Modular and scalable, "pay-as-you-grow" solution
- Robust remote monitoring and management capabilities

Modular and scalable, "pay-as-you-grow" solution

The ACCELERATOR 4800 Series provides a "pay-as-you-grow" solution eliminating the need for costly upfront capital. Rack-and-stack functionality allows the ACCELERATOR 4800 Series to scale beyond 6Mbps. Greater speeds are supported with load sharing and rack-and-stack options for IMA, fractional DS3/E3, DS3/E3, and TLS for larger central sites.

Rapid deployment, instant results

The ACCELERATOR 4800 Series can be seamlessly integrated into existing networks, to immediately accelerate all IP traffic either On-Path (on the link between the LAN segment and the router) or On-LAN (as any other LAN element). The ACCELERATOR 4800 Series was designed for data center-grade lights out operation.



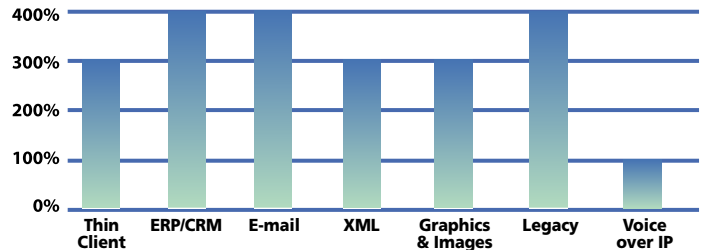
ACCELERATOR 4800 Series

The ACCELERATOR's unique design, with no moving parts; auto-bypass functionality; and its support for Hot Standby Router Protocol (HSRP, IETF RFC-2281) as well as Virtual Router Redundancy Protocol (VRRP, RFC-2338); guarantee unsurpassed uptime and availability.

Robust remote monitoring and management capabilities

The ACCELERATOR 4800 Series provides extensive performance and fault management functions like SNMP, RMON/RMON II and queuing. This built-in-functionality not only eliminates the need for costly probes, but also assures basic traffic policies, making network deployments easier to manage and maintain.

Network Capacity Increases



SPECIFICATIONS

Physical

Width x Height x Depth:
17" x 1.7" x 13"
(43.2 cm x 4.4 cm x 33 cm)
Weight: 6.2 lbs (2.8 kg)

Environment

Temperature: 32-122° F (0-50° C)
Humidity: 0 to 90% (non condensing)

Reliability

- ISO 9001 certified manufacturing facility
- Transparent auto-bypass
- No moving parts
- Support for HSRP (RFC-2281) and VRRP (RFC-2338)
- Error/packet drop correction for non-reliable links

Interfaces

LAN: Ethernet Autosensing 10/100 BaseT
Management Interfaces:
Console & Auxiliary: RS-232C (DB-9)

System Acceleration Capabilities

- 256 Kbps - 6Mbps supporting up to 50 IP Tunnels

Power Rating

Power Supply:
Single Autosensing 100/230 Volt
AC Line Frequency: 50/60 Hz

Local/Remote Management Features

- Status LEDs
 - Power
 - Port activity (Active, Ready)
- Advanced Cisco-like Command Line Interface (CLI) accessible via Telnet, Console, Dial Up
- SNMP V1.0 (MIB II) and Private MIB support
- Web-based User Interface
- RMON/RMON II
- TFTP software upgradeable

Security and Logging Features

- Authentication and authorization: RADIUS (RFC 2138), TACACS+, internal database
- Syslog event logging
- Email alerts from log
- SNTP-Simple Network Time Protocol

Traffic Management Features

- IP Tunnel flow control
- Queuing: FIFO, Weighted Fair, Priority and Custom Queuing

Approvals

Safety: UL 1950, CAN/CSA C22.2, EN60950/A4, No. 950-95
EMC: FCC Part 15 subpart B Class A, EN55022, EN61000-4-2, EN61000-4-3, EN55024, EN61000-4-4, CISPR16

Specifications are subject to change without notice.



Expand Networks
103 Eisenhower Parkway
Roseland, NJ 07068
Telephone: 973-618-9000
Fax: 973-618-9254
Toll Free: 888-892-1250
www.expand.com
info@expand.com

(Expand Networks, ACCELERATOR 6800, ACCELERATOR 4800, ACCELERATOR 4000, ACCELERATOR 2800, ACCELERATOR 2750, and ACCELERATOR 1800 are trademarks of Expand Networks, Inc. All other trademarks are the property of their respective owners.)