

The I-O 2677e is an economical 5250 Ethernet display designed for IBM System i5, iSeries, and AS/400 data entry via TCP/IP. Compared to PC workstations, the 2677e is a low-priced, low-maintenance solution that provides a high level of productivity and performance.

Full Featured

The 2677e is a full-featured, text-based, 5250 display that includes multiple display sessions and 1 host printer session. Bright, sharp characters are supported on any PC-compatible monitor or LCD. I-O's traditional 122-key 5250 style keyboard offers IBM midrange users fast and convenient input.



Printer Support

The 2677e has a host addressable printer port that allows native IBM System i5, iSeries, and AS/400 print jobs to be printed in an Ethernet environment. With the I-O 2677e, users have the flexibility and control of page-range printing, error reporting, and faster printer speeds.



Experience

Since 1977, I-O Corporation has been a pioneer in developing IBM midrange solutions. In addition to I-O's well-known display technology, the 2677e incorporates I-O's award-winning IBM Host Printer emulations. The I-O 2677e is the right choice for those dedicated to IBM host data processing.



Emulations

- **For Mainframe**
3278, 3279, 3287
- **For AS/400**
5291, 5292, 5251, 3179, 3196,
3180, 3477FC/FG, 3486, 3487,
3489
- **3812 Printer Emulation**

Print Drivers

PCL, Non-PJL PCL, IBM Proprinter, IBM PPDS (matrix), Epson ESC/P2, Epson DFX 8500/5000+, Epson LQ, Epson FX/DFx, Generic

Display

VGA/LCD Monitor (or Better),
80/132 column full screen

Network

TCP/IP (TN5250e), 10/100 BaseT auto sensing, DHCP Client, OS/400 version 3.2 or newer

Ports

RJ45 10/100 Fast Ethernet, DB15 VGA Video, three(3) USB ports for Printer, Keyboard, and Mouse

Multi-Language Support

Arabic, Baltic-Multilingual, Chinese, Cyrillic, Danish, English (US/UK), Finish/Swedish, French, German, Greek, Hebrew, Iceland, Latin, Italian, Japanese, Korean, Spanish, Thai, Turkey Latin

Approvals

- **Logic Unit**
FCC15, CE
- **Power Supply: UL, CE**

Power Supply

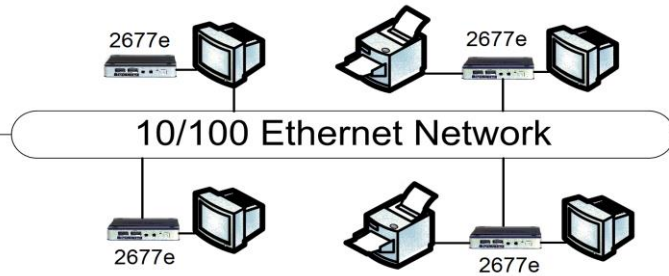
110-240V AC auto-ranging,
5 Volt DC, 2 Amp
(Shield grounded)

Physical

3.94"L x 3.14"W x .80"H
10 ounces

General

Attaches to an IBM System i5, ZOS, iSeries, and AS/400 via an Ethernet LAN, Multiple Display Sessions, 1-Printer Session, 122-key IBM 5250-style keyboard, PC-Style 104 keyboard, host addressable printer port, TN5250e display/printer protocol, record/playback, multi-host support, local or remote configuration on host, 3-year warranty on logic unit and keyboard.



Features & Benefits

- **Low Cost**
Low initial cost and less expensive to maintain and support than a PC.
- **Record/Playback**
Up to 1500 repetitive keystrokes can be recorded in a single function key (24 function keys available).
- **True IBM 122-key 5250-style Keyboard Layout**
IBM System i5, iSeries, and AS/400 compatible with fast and easy input.
- **Host Addressable Printer Port**
Native host print jobs can be sent to the USB port via TCP/IP.
- **Full Featured 5250 Display**
Multiple Display Sessions. 80 and 132 column display, multi-host support, record/playback, and rule cursor.
- **I-Os Award-Winning Printer Emulations**
3812/4214 emulations with page range printing, error reporting, and fast first page out.
- **Compact Design**
Requires minimal desk space. LCD mounting hardware included.
- **Easy to Configure**
User set-up is simple and easy using either local or remote configuration. Sessions are auto configured on the host.