



MACHINES & MEDIA

# RFMAX RFID PORTAL ANTENNAS

---



# WHAT IS RFMAX?

A short and simple, but comprehensive portfolio of antenna and cables solutions for RFID system integrators.

High Performance and High Quality to provide “**Maximum RF**” performance of your RFID system.

- Fixed Reader Antennas
- Door Portal Antennas
- Antenna Mounting Solutions
- Coax Cable Assemblies
- Enclosures



# EVOLUTION OF RFID DOCK DOOR PORTALS FROM JAMISON TO SLS TO THE FLEX-ANTENNA

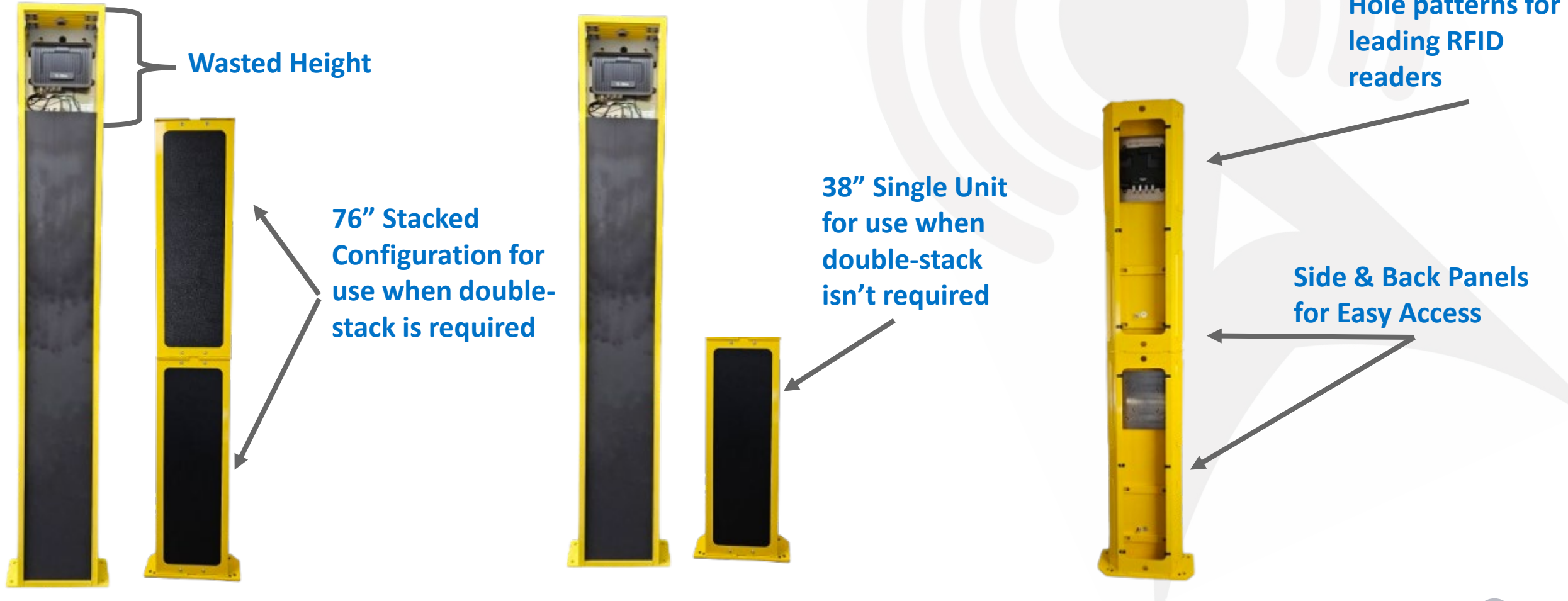


	Dock Door 1.0 (<2015)	Dock Door 2.0 (2015 – 2024)	Dock Door 3.0 (2024+)
Weight	130 lbs	48 lbs	19 lbs (each unit)
Height	78 in	96 in	38 in (each unit)
Antenna Type	Circular	Multi-linear	Multi-linear
Mounting	Floor	Floor	Floor, Pole, Chain, Ceiling, Wall, VESA
Shipping Type	LTL Freight (Crate)	LTL Freight (Extended Pallet)	FEDEX, UPS, USPS, DHL (Standard)
Custom Branding	N/A	Custom Order Only	Easy Order & Self-Install

# FLEX-ANTENNA VS. COMPETITION COMPARISON



MACHINES & MEDIA





# FLEXANTENNA READER INSTALLATION (READER AGNOSTIC)

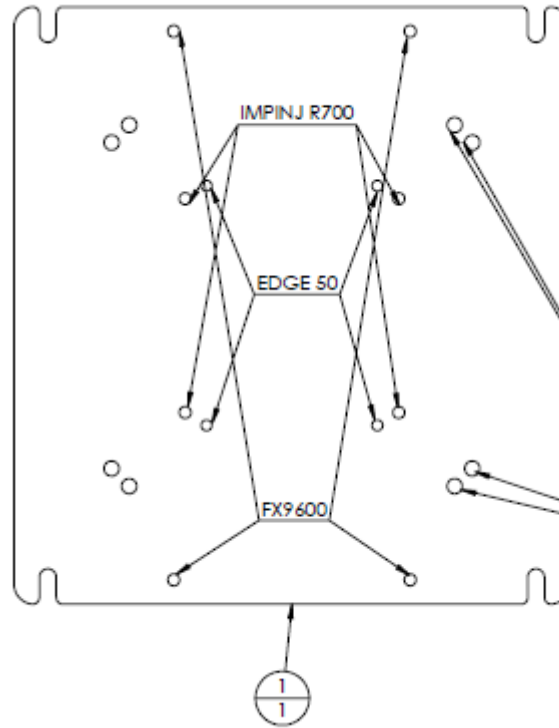


MACHINES & MEDIA

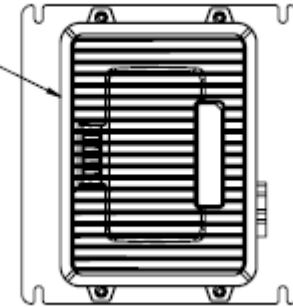


Easy to remove  
mounting plate

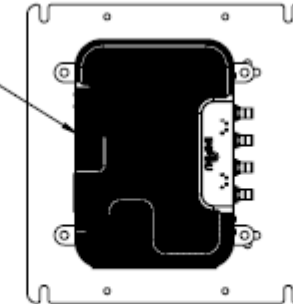
Included hardware  
fits all leading RFID  
readers!



FX9600 RFID Reader



Impinj R700 RFID Reader



IMPINJ R700 FOOT MOUNT



RFID READERS SHOWN FOR REFERENCE ONLY



# FLEX-ANTENNA PERFORMANCE

# FLEX-ANTENNA DATASHEET



MACHINES & MEDIA

## SPECIFICATIONS

**Dimensions:** 38.0" x 12.8" x 5.8"

**Weight:** 19 lbs (per unit)

**Temperature Range:** -4°F to 140°F (-20°C to 60°C)

**Frequency Range:** FCC 902-928 MHz, ETSI 865-868 MHz

**Gain:** 8 dBi

**Impedance:** 50 Ohms

**Maximum Input Power:** 10 Watts

**Connector:** TNC Reverse Polarity

**Polarization:** Multi Linear

## FLEXANTENNA RF PERFORMANCE

- Multi-Linear
- Focused Beams
- Captures All Orientations
- Strong Near-Field Performance



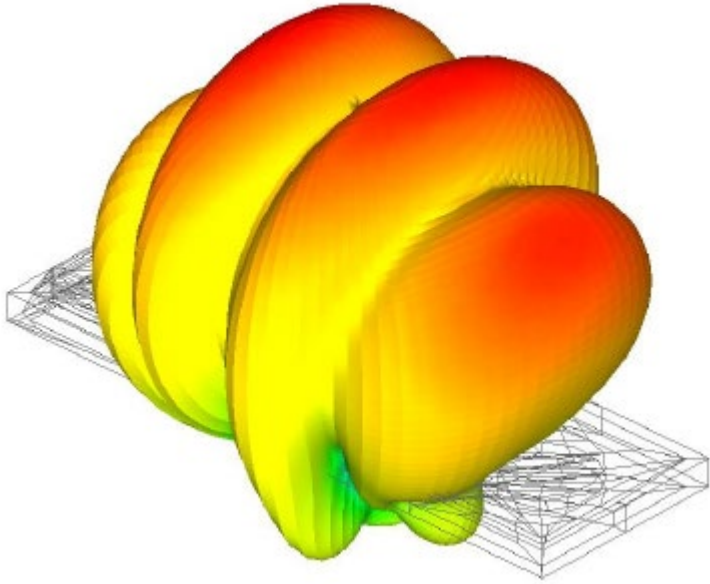
## FLEXANTENNA READ CHARACTERISTICS

- Optimal for Dock Doors / Conveyors
- Zone Control
- Compatible With Leading RFID Readers
- Integrated Antennas – No Adjustment Required

# FLEX-ANTENNA RF PERFORMANCE

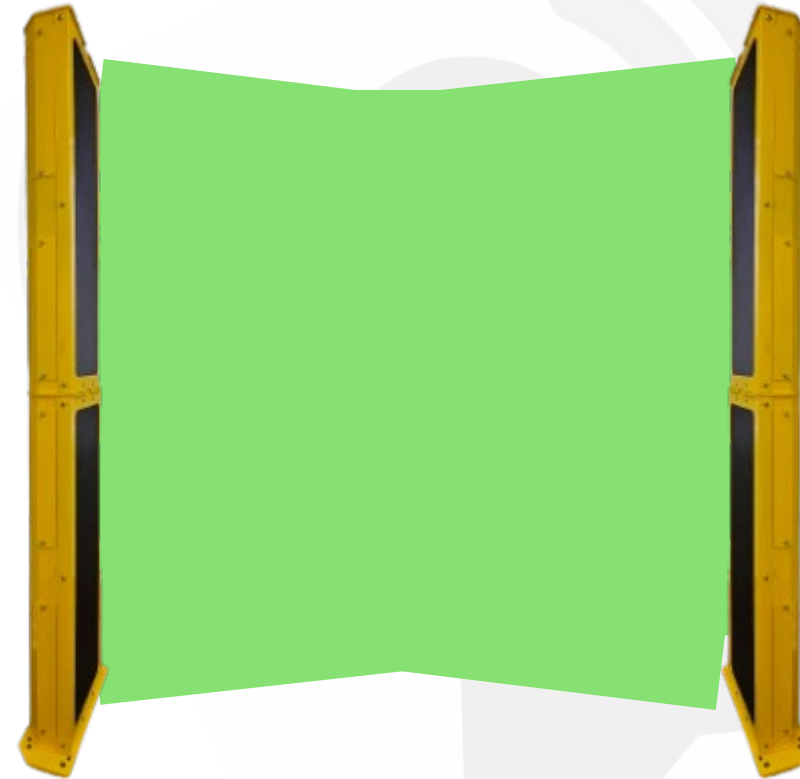


MACHINES & MEDIA



## FLEXANTENNA RF PERFORMANCE

- Multi-Linear
- Focused Beams
- Captures All Orientations
- Strong Near-Field Performance



## FLEXANTENNA READ CHARACTERISTICS

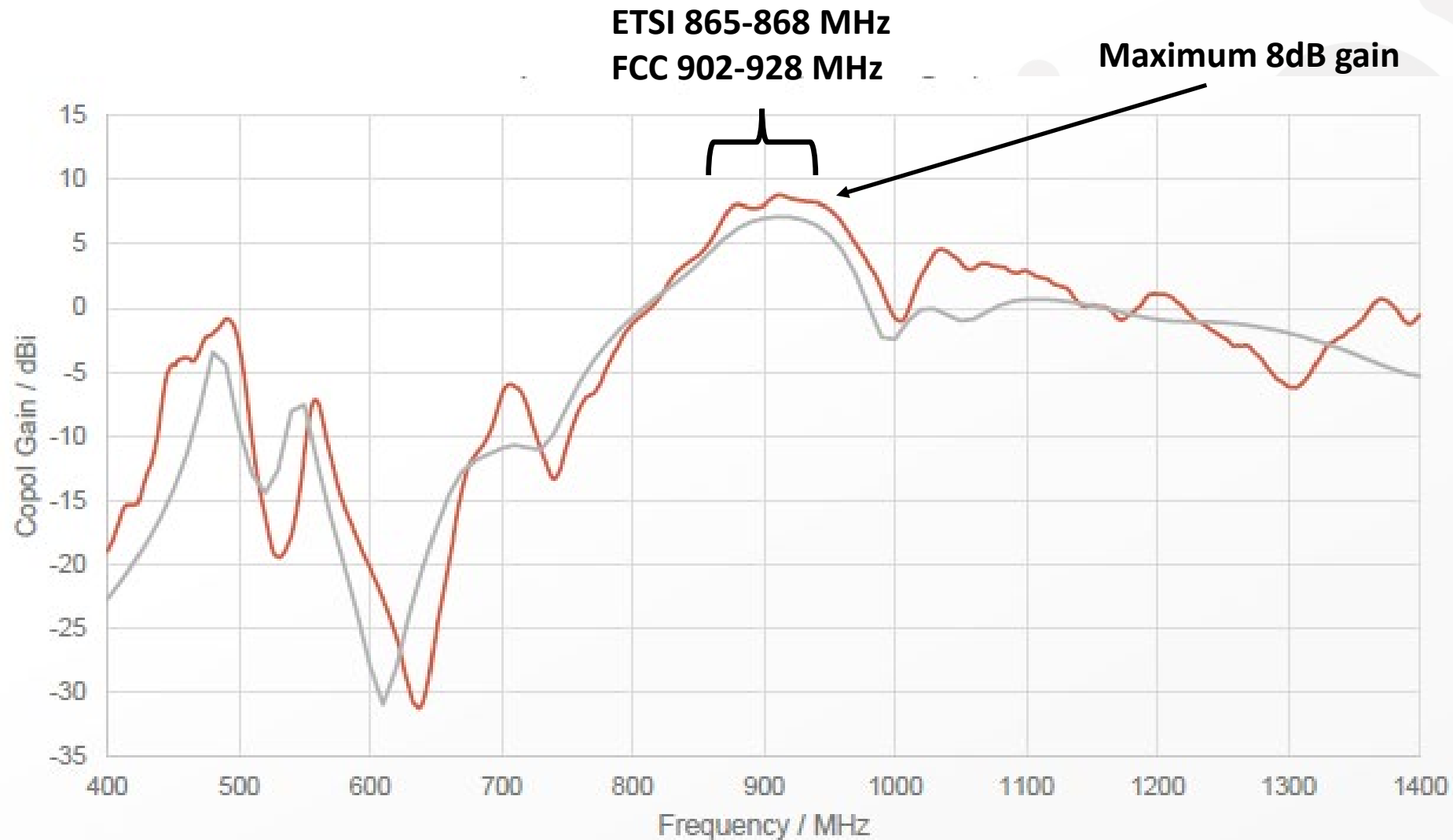
- Optimal for Dock Doors / Conveyors
- Zone Control
- Compatible With Leading RFID Readers
- Integrated Antennas – No Adjustment Required



# FLEX-ANTENNA RF PERFORMANCE



MACHINES & MEDIA



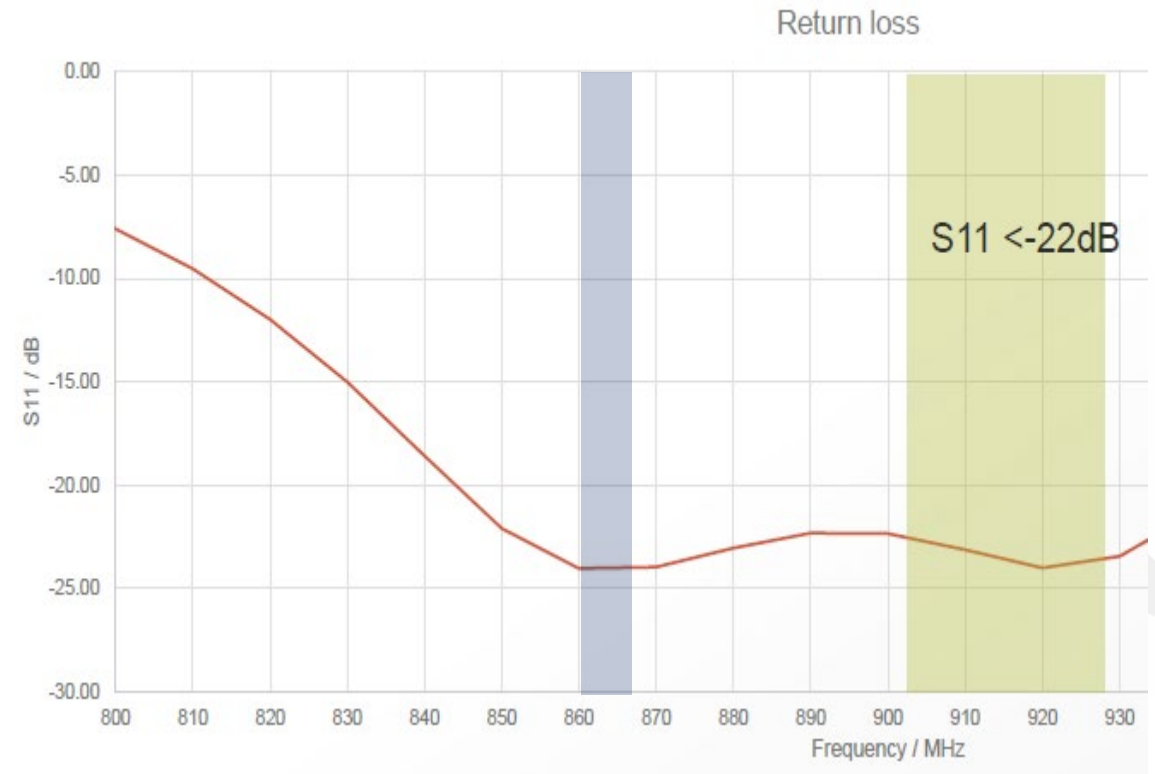
# FLEX-ANTENNA RF QUALITY



MACHINES & MEDIA

## Production Quality Testing:

- Every unit is tested with a network analyzer
- Some variation occurs due to manufacturing tolerances
- Return loss / S11 measurement is used to monitor variation
- Quality standard is to keep S11 below 20dB (equals 0.04dB mismatch loss)





# **THE BENEFITS OF FLEX-ANTENNA**



# FLEX-ANTENNA-MULTIPLE USE CASES

- **Manufacturing**

- Materials
- Work in Progress
- Finished Goods
- Refurbishing
- Tooling

- **Logistics**

- Container Tracking
- Inbound
- Outbound





# FLEX-ANTENNA MOUNTING OPTIONS



U-Bolt Pole Mount



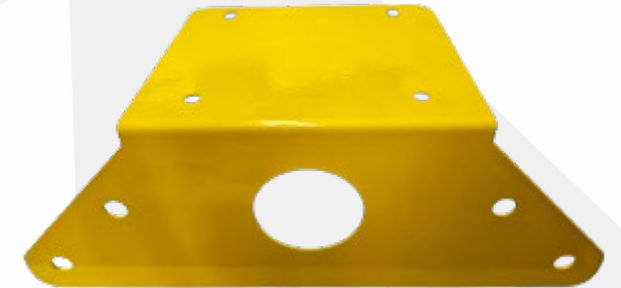
Hanging Chain Mount



Wall & Ceiling Flush Mount



Floor Mount with Leveling



VESA 100x100 Mount



# FLEX-ANTENNA MOUNTING OPTIONS



MACHINES & MEDIA

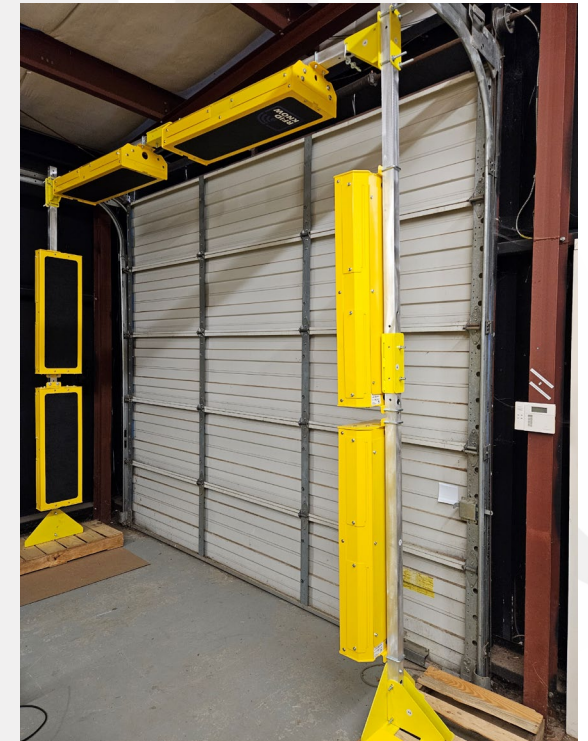




# NEW! ADJUSTABLE MOUNTING STAND

- **Features:**

- Off-the-shelf kit with all hardware
- Vertical and horizontal spans
- U-Bolt pole mounts for portals
- Pass through for cabling
- Opposing sides can connect
- Lightweight durable construction





# FLEX-ANTENNA GPIO ACCESSORIES

- LED Tower Indicator Lights
  - Shipment Verification
  - Equipment Status
  - Audible Alarm
- Photelectric Sensors
  - Motion Detection
  - Doorway Open / Close Detection



# FLEX-ANTENNA: LOGISTICAL ADVANTAGES



MACHINES & MEDIA



## LTL Carrier Shipping

- Oversized Pallets
- Forklift Required
- Loading Dock / Lift Gate Needed
- Space Needed to Stage / Store
- Hundreds of Dollars for shipping



## FedEx / UPS / Postal Shipping

- Convenient Corrugated Box
- Easily handled by single person
- Standard Delivery Options
- Stackable and Easily Stored
- Inexpensive 2 Day Shipping





# FLEX-ANTENNA: LOGISTICAL ADVANTAGES



## Transporting Legacy RFID Portals

- Oversized Pallets
- Forklift Required
- Loading Dock / Lift Gate Needed
- Does not fit into vehicle cab



## Transporting FlexAntenna RFID Portals

- Convenient Corrugated Box
- Easily handled by single person
- Stackable and Easily Stored
- Fits into vehicle cab





# FLEX-ANTENNA LOGISTICAL ADVANTAGES



## Legacy (8 foot tall) RFID Portals

- Oversized Pallets (expensive!)
- Forklift Required!
- Loading Dock / Lift Gate Needed!
- Does not fit onto shelving



## 38 inch / 19lbs. Flex-Antenna RFID Portals

- Ships in a convenient corrugated Box
- Easily handled & installed by a single person
- Stackable and Easily Stored
- Fits onto shelving

# FLEX-ANTENNA ADVANTAGES SUMMARY

- Flexible Modular Design
  - Configure on-site to meet project needs
  - Less SKUs
  - Reduce Spare Parts Costs
  - Multiple mounting options
    - Floor Stacks
    - Tunnels / Conveyors
    - Overhead Chains
    - Poles
    - Walls & Ceilings
    - VESA Brackets
- Reduced Size & Weight
  - Single person setup
  - Lower shipping costs
  - Drywall anchor friendly



**MACHINES & MEDIA**

Machines & Media, Inc.  
7935 Stone Creek Drive/Ste 130  
Chanhassen, MN 55317  
**1-800-669-5250**  
[RFID@machinesandmedia.com](mailto:RFID@machinesandmedia.com)